

Cardiac rehabilitation exercise programme (Blackbird Leys)

Information for participants

PLEASE BRING THIS FOLDER WITH YOU
TO EACH EXERCISE SESSION



Name:

Start Date:

Graduation Date:

Site: Blackbird Leys Leisure Centre (Pegasus Road, Oxford, OX4 6JL)

**Please contact us if you are unable to attend.
If you fail to attend 2 consecutive sessions, and we have heard nothing
from you, we will give your place to someone else.**

**Cardiac Rehabilitation Department,
John Radcliffe Hospital: (01865) 220030**

Blackbird Leys Leisure Centre: (01865 467020)

DATA PROTECTION CARDIAC REHABILITATION EXERCISE SESSIONS

You have now been invited to take part in the hospital-supervised Cardiac Rehabilitation exercise scheme at a local leisure centre. In order for us to look after all the patients at these sessions, we have asked one of the gym staff from the leisure centre to join us to help supervise the class. If you choose to, and it is appropriate for you, you may be offered the opportunity to join the supervised leisure centre exercise scheme once you have completed the hospital-supervised exercise scheme.

We will need to share some of your medical history with the gym staff involved so that they can look after you appropriately. The information we will share with them is the minimum they will need to help look after you or prescribe your individual programme. This will be information such as:

- The treatment you have had in hospital and how you responded to this
- The type of medications you are taking
- The results of some of your tests or investigations

It is important that you fully understand that we need to disclose this type of information to the gym staff, both verbally and in writing, and that you consent to this. All the gym staff that work with us have agreed and signed a confidentiality statement. This means that they, like the hospital staff, are not allowed to disclose any of the information that they receive about you to a third party. They must treat the information that they do know about you with respect and in accordance with the Data Protection Act and the Access to Health Records Act.

We would therefore ask you to sign this document to confirm that you have been informed about consent and have had the opportunity to ask any questions that you may have.

Signed:

Date:

SAFETY CONSIDERATIONS FOR GYM BASED SESSIONS

I have read and understood the information that has been provided regarding the safe use of the exercise equipment. If I have any questions, I will consult a member of staff before starting the exercise.

Signed:

Please print name:

Date:

Why is physical activity so important?

Welcome to the exercise part of your cardiac rehabilitation. Whatever your current health you can benefit from physical activity. Surveys have shown that 70% of the population in the UK do not do enough regular physical exercise to achieve health benefits and to protect their heart. Exercise also plays a very important role in your recovery after a heart attack or heart surgery.

Exercise definitions:

Current guidelines state that to gain health benefits we all need to do physical activity on most days of the week, at a moderate intensity level for 30 to 45 min. But what do we mean when using terms such as *physical activity, exercise, physical fitness and health related fitness*?

Physical activity is any bodily movement with a significant increase in energy expenditure. Physical activity therefore includes activities such as walking your dog, gardening and cleaning.

Exercise is something that you are going to do during the cardiac rehabilitation programme. Exercise is a type of physical activity. It is structured, planned and repetitive movements that are done to maintain or improve one or more of the characteristics of physical fitness.

Physical fitness encompasses many characteristics such as your stamina, flexibility, balance, etc. Your physical fitness relates to your ability to perform physical activity.

Health related fitness refers to your ability to perform your daily activities. Doing physical activity or exercise on most days of the week can help to increase your ability to perform your daily activities more easily. Health related benefits, especially for someone with heart disease (or someone with a high risk of heart disease), are the following:

- Increased exercise threshold for the onset of chest pain (angina)
- Improved cholesterol levels
- Lower blood pressure
- Improved blood sugar control
- Lower anxiety and depression
- Improved ability to perform daily activities
- Increased confidence and sense of well-being
- Improved rate of return to work and leisure activities
- Fewer visits to the doctor and hospital
- Reduced dependence on cardiac drugs
- Improved feelings about being able to cope after a heart attack or surgery.

What is even more encouraging is that these changes are possible with light to moderate exercise. So don't panic – we aren't going to make you run marathons! Your exercise programme will be designed around you, your needs and your capabilities, and will gradually progress as you gain in fitness and confidence. During the sessions you will be taught how to use the various pieces of equipment and how to exercise safely and effectively.

How often should I be exercising to gain health benefits?

We get most benefit from doing physical activity on a regular basis, rather than just once or twice a week. In order to gain the maximum benefit to your health, you should aim to do at least 30 minutes of physical activity on 5 or more days per week. So, even though you are starting the supervised exercise sessions it is very important that you continue with your regular activity at home on other days. Remember, this 30 minutes does not include your warm up and cool down so make sure you leave enough time so you don't have to rush the exercises. Your weekly plan could include activities such as gardening or housework or walking to the local shop. You can split up your 30-minute activity session – for example you could do 15 minutes of housework, twice a day.

Additional activity recommendations

It may be that you are keen to resume other leisure activities or pastimes, such as swimming or golf. Our advice would be to continue walking regularly, but do not attempt any other leisure activities before first discussing it with a member of staff. Once you have completed some supervised rehabilitation sessions, and we have had a chance to assess your fitness level and exercise capabilities, we will then be happy to give you guidance about other suitable activities.

At the back of this folder you will find a physical activity diary. We recommend that you record your exercise and activity for the first month that you attend our classes, and also details of how you feel and whether you experience any problems. Staff will regularly review your diary during the programme. Keeping the activity diary will give you an accurate and useful record of the progress that you are making.

THE STRUCTURE OF THE PROGRAMME

Your exercise classes will take place at the Blackbird Leys Leisure Centre on:

Thursday: 11.00am – 12.00pm

1st Exercise session: please arrive for 11.10am

Following sessions: Please arrive 10.45am – 11.00am

We offer you 10 weeks of exercise. At your assessment we will tell you the date that you will graduate (i.e. the date of your last exercise session). At the end of the session on your graduation day we will give you details about activities that are available to people who have finished our supervised programme. We will talk to you about your interests and how you intend to keep exercising in the future.

What to bring with you

All you will need during your exercise class is:

- **This exercise folder**
- **Your GTN spray/tablets** (if you have been given them)
- **Your blood glucose monitor** (if you are diabetic)
- **Fast acting bronchodilator** (if you are asthmatic)
- **A bottle of water**
- **You may also wish to bring a small towel**

What will happen in the classes?

The class will follow the same format every time, as described below:

- Check-in (blood pressure and heart rate check)
- Warm-up (all 3 parts should take 15 minutes in total)
- Main exercise
- Cool down (both parts should take 10 minutes in total)
- Check-out (blood pressure and heart rate check)

You must inform the cardiac rehab staff when you are checking-in if:

- You have forgotten to take your medication.
- You have had your medication changed.
- You have been feeling unwell (If you are taking antibiotics, have chest discomfort, excessive shortness of breath, coughs, colds, stomach upsets, discomfort in joints or muscles.)

During the sessions you must remember to **keep your feet moving** whenever possible (so no standing around chatting!). This rule should apply to all three phases of your exercise session (warm up, main session + cool down), and also when you are walking outside. This has important implications for your blood pressure and the amount of work that your heart has to do. For this reason **please do not stand around waiting for one particular piece of equipment** – keep your feet moving, and look for an alternative activity.

SENSIBLE PRECAUTIONS

- Exercise only when you feel well. **If you are unwell with a virus, cold, tummy bug or if you are taking antibiotics please do not attend the exercise sessions.** We recommend that you wait at least 2 days after the symptoms have disappeared before starting any type of physical activity. If you are unsure if you are well enough to exercise, please call and ask a member of the team before going to the gym.
- Make sure that you have eaten a light meal approximately 1-2 hours before exercising. Do not exercise on either a full or completely empty stomach.
- Do not exercise in the extremes of temperature. Dress warmly when exercising in the cold. If it is warm, slow your pace.
- Know your capabilities. Exercise regularly but do not exceed the levels that have been recommended to you. Slow down when walking up hills.
- Wear proper clothing. We recommend loose fitting, comfortable clothing that is appropriate for the weather. Do not wear heavy tracksuits in an attempt to lose weight. All you will lose will be water and minerals, which could be harmful. Wear shoes that are comfortable for your activity.

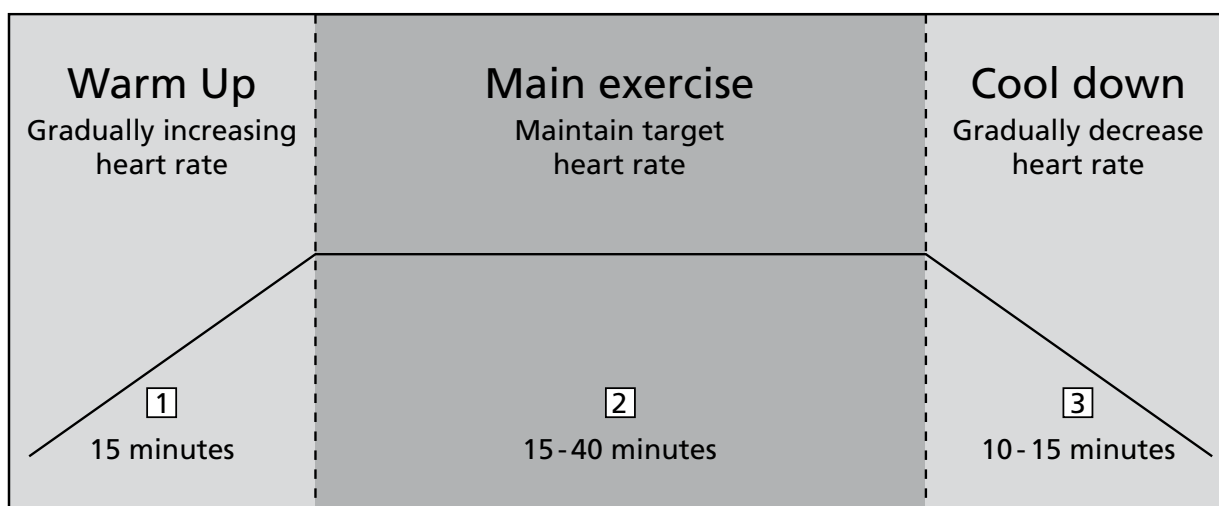
When you come to the gym please wear loose comfortable clothing, for example:

- ✓ soft-soled shoes or trainers
- ✓ Sweatshirt or jumper with a T-shirt or shirt underneath
- ✓ Tracksuit trousers, jogging bottoms or shorts
- ✗ For safety reasons please do not wear sandals or slip on shoes
- ✗ Please do not wear denim or cords
- Take your medication as normal each day when you are exercising. If you have been given a GTN spray or tablets, remember to keep them with you at all times. You should never stop any of your medications without discussing it with your GP.

You must compare how you feel each day with your usual symptoms and capabilities. If you develop any new symptoms or find that your usual symptoms are worse (i.e. more breathlessness, more frequent angina, swollen ankles) you must inform your GP as soon as possible.

WARMING UP AND COOLING DOWN

You should always think of any activity you are doing as a three-part process. Warming up and cooling down are just as important as the main activity itself.



WARM UP:

Always warm up with light exercise at the start of the session. This has important safety implications. For example:

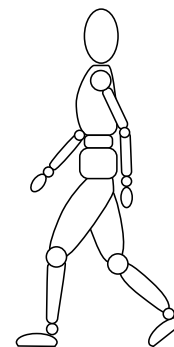
- By gradually increasing the workload of the heart, it is able to adapt slowly to increasing demands. This is much safer than suddenly increasing the workload. It helps reduce the risk of angina and disturbances in your heart rhythm by making sure that the coronary arteries are dilated and that your heart has a good supply of oxygen.
- Including pulse-raising activities, e.g. walking, marching on the spot, or low-level cycling, followed by stretching of the muscles that you are going to be using, reduces the risk of injury.
- Whatever you do for your warm up it should be completed at a low level, i.e. light / easy, equivalent to 1-2 on the effort score.
- Ideally the warm-up should last 15 minutes and then you are ready to start your main exercise.

During your exercise sessions you will be shown how to warm up and cool down. This will include the following movements and stretches.

WARM-UP EXERCISES

1. Pulse raising (movement) activities

Walking, marching on the spot, or low-level cycling are suitable ways of raising your pulse. Do this for the first 5 minutes of the warm up, starting very gently and gradually increasing the intensity. The purpose is to warm up the muscles in preparation for stretching, and to increase the heart rate gradually.

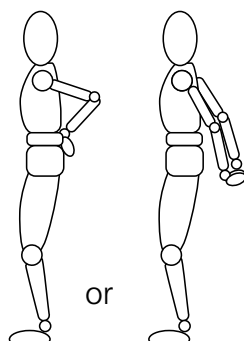
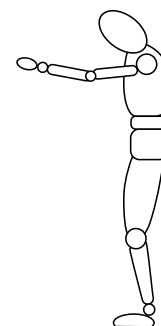


2. Stretching activities

The next 5 minutes of your warm up should be to stretch the muscles that you are going to be using. Only stretch as far as your muscles allow. It is important to remember to keep your feet moving in between the stretches so that your body remains warm and your heart rate is still raised slightly, so maintaining the effects of the first 5 minutes of the warm up.

Upper back stretch

Lock your fingers together with you arms stretched out in front. Lower your head forward to look at the floor. Remember to keep your feet moving. Hold the stretch for 10-15 seconds.

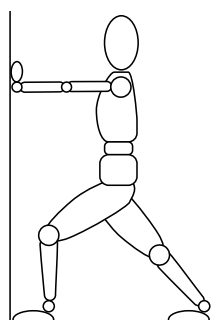
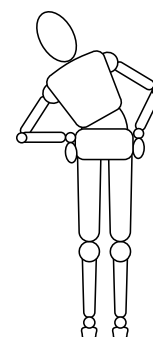


Chest stretch

Place you hands on your lower back. Gently move your elbows towards each other. Keep your back straight. Remember to keep your feet moving. Hold the stretch for 10-15 seconds.

Lower back and waist mobility

Side bends. Stand with your feet shoulder width apart either with your hands on your hips or down by your side. Slowly lean to one side from your waist, being careful not to move your hips. Come back to the upright position and lean to the other side. Repeat 5 times.

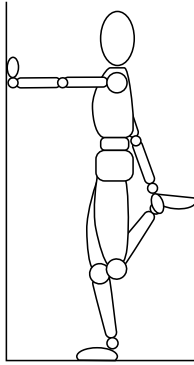
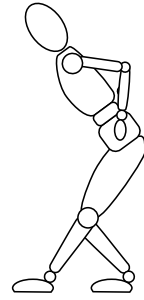


Calf stretch

Press the heel of the back leg into the floor until a gentle stretch is felt in the calf muscle in the back of the lower leg. If a stretch is not felt, adjust the position by moving the back foot further back and hips forward. Hold the stretch for 10-15 seconds on each leg.

Hamstring stretch

With one leg in front of the other, lean forward slightly, placing both hands on the hips. Straighten the front leg and slightly bend the back leg. Keep the head up and continue to lean until a stretch is felt in the back of the forward straight leg. Hold for 10-15 seconds. Repeat on the other leg.

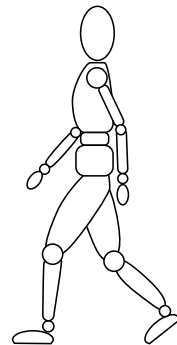


Front of thigh stretch

Put your left hand on the wall for support. Lift your right knee up in front and hold either your right ankle, back of your shoe or the back of your trousers by your ankle. Keep the supporting leg slightly bent throughout. Move your knees together by lifting your right foot behind the body. Keep the back straight and push the hip forward until a gentle stretch is felt. Hold the stretch for 10-15 seconds and then repeat with the left leg.

3. Pulse raising (movement) activities

The final 5 minutes of the warm up should be pulse raising activities at a slightly higher intensity than the first 5 minutes. The purpose is to continue to increase the heart rate in preparation for the main exercise session. Walking, marching on the spot, or low-level cycling are suitable methods of pulse-raising.



COOL DOWN:

It is important you leave enough time at the end of your session to cool down properly. Gradually lower your pace during the cool down. The goal is to bring your body back to its resting state.

- A thorough cool down for 10 minutes reduces the risk of fainting or dizziness that could result from a sudden drop in blood pressure if you suddenly stop exercising.
- Cooling down also reduces the risk of disturbances in your heart rhythm that could happen if you stop exercising suddenly.

(These factors reduce the risk of sudden heart problems and should be taken very seriously.)

- Stretching during the cool down also helps to reduce any muscle soreness that may be caused by the activity.
- The cool down should be performed at a gradually slower speed. The aim is to bring your body back to its resting state gradually.

HOW HARD SHOULD I BE WORKING?

Monitoring your exercise level

It is important to make sure that you are not pushing your body too hard, but also that you are working hard enough to achieve the benefits that we have discussed. During the programme we will show you various ways of checking how hard you are working so that you are able to exercise safely and effectively, both in a supervised setting and on your own.

1. Measuring your heart rate (pulse)

Your heart rate, i.e. how many times your heart beats per minute, is a very useful indicator of how hard you (and therefore your heart) are working. During exercise your heart rate will increase in response to the demand of working muscles to supply blood and oxygen.

The best area to measure your heart rate is between the tendons in the middle of your wrist and the bone on the outside of your up-turned arm, about 1 inch from the base of your thumb.

- Lightly place your index and middle fingers (never use your thumb) over the area described above. You should feel a slight pulsing as your heart pushes blood around the body.
- Count the number of beats that you feel for a 15 second period.
- Multiply this by 4 and this will give you how many times per minute your heart is beating – this is your heart rate.
- It is important that you measure your heart rate **as soon as possible** after each exercise, before it starts to slow down - otherwise it will not be a true reflection of how hard you are working.

We will give you a recommended heart rate range when you start to exercise. This range is related to you, your diagnosis and your medication, so everyone will be different. Your target heart rate is just a guide. It is important to remember that certain medications, e.g. beta blockers, will affect the way your heart rate responds to exercise. It may not increase as much as it used to. Alternatively, if you reach the top end of this range, don't worry, you don't need to be working any harder than this so just reduce the level you are working at.

2. Effort score

A second way of measuring how hard you are working is to measure your level of effort and give it a score of between 1 and 10. Use the table below.

Effort score		
0	No effort at all	(no intensity)
0.5	Extremely weak	(just noticeable)
1	Very weak / very light	
2	Weak / light	
3	Moderate	
4	Somewhat strong	
5	Strong	
6		
7	Very strong	
8		
9		
10	Extremely strong	(almost maximum)
*	Maximal exertion	

(Borg, G. CR 10 scale 1982, 1998)

During the exercise we want you to pay close attention to how hard you feel you are working. This feeling should reflect your total amount of exertion and fatigue, combining all sensations and feelings of physical stress, effort and tiredness. Don't concern yourself with any one factor such as leg pain, shortness of breath or exercise intensity, but try to concentrate on your inner feeling of exertion. Try not to underestimate or overestimate this; be as accurate as you can (ACSM 2006).

Ideally, at this stage of your recovery we would like you to be working at a level that corresponds to 'moderate – somewhat strong' (level 3-4). If you would describe your effort level as 'strong', then you are working too hard and need to slow down. You must be completely honest and try to be as accurate as possible. This is a really useful way of checking your activity levels and keeping within comfortable limits.

3. Talk test

This is another simple way of assessing how hard you are working. Try having a conversation while you are exercising. If you are able to speak in complete sentences and are only a little out of puff, then you are working at the correct level. If you find yourself gasping and short of breath, then you are working too hard and need to slow down.

SAFETY ADVICE

Please read and follow these safety guidelines.

1. **What should I do if I experience any pain while exercising?**

STOP whatever you are doing, no matter where the pain is coming from. You should never experience any pain during or after physical activity. **IF YOU ARE IN THE MIDDLE OF A REHABILITATION CLASS, TELL ONE OF THE MEMBERS OF STAFF IMMEDIATELY.**

2. **Are there any other reasons that I should stop exercising?**

Yes, you should listen to your body and stop exercising immediately if you experience any of the following:

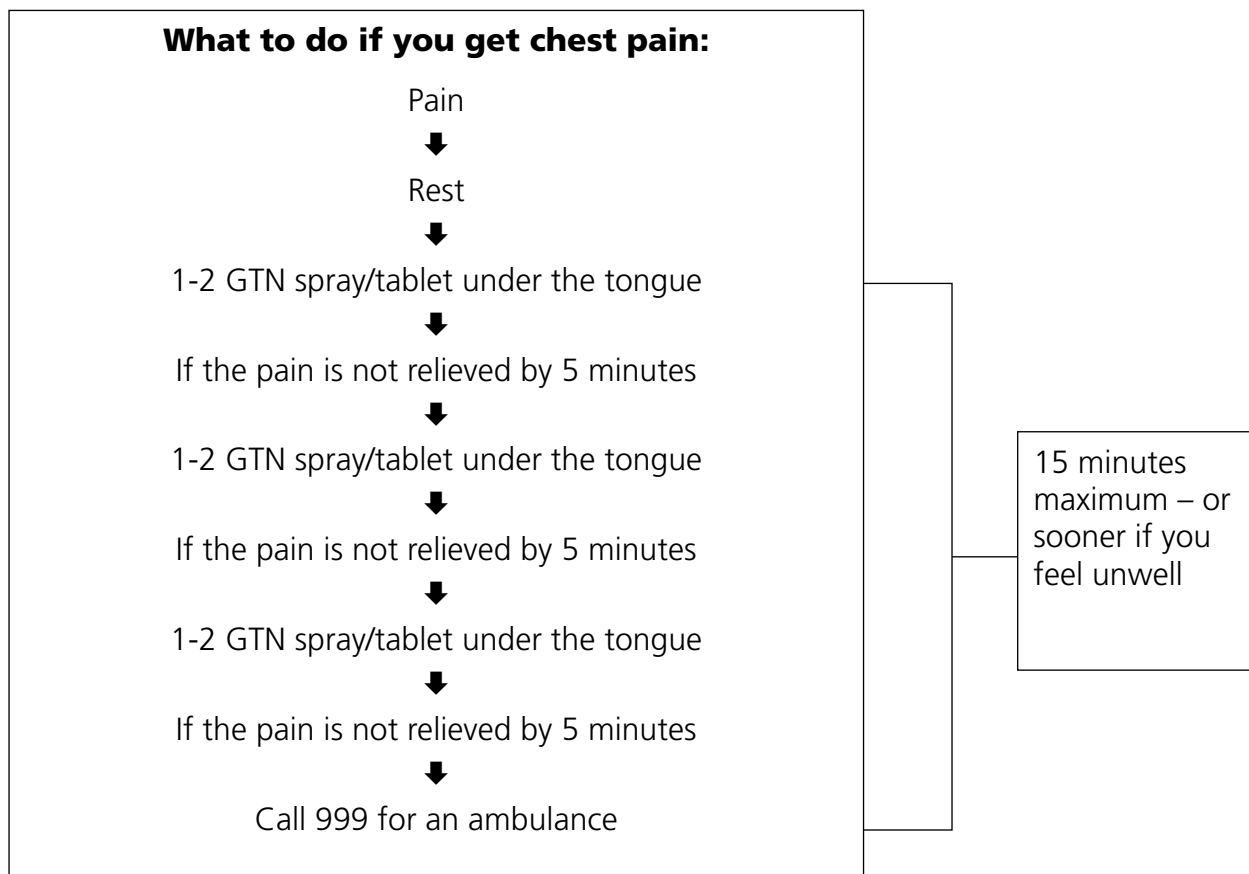
- Pains or tightness in the chest
- Pain, swelling, stiffness in joints
- Palpitations
- Excessive sweating
- Excessive shortness of breath
- Sickness/nausea
- Feeling dizzy or faint

Please let one of the cardiac rehabilitation staff know IMMEDIATELY if you are experiencing any of these problems.

It is also important that you stick to the prescription that is given to you. If you feel that you are capable of walking or pedalling faster than your programme indicates, do not just increase your programme yourself. Instead, talk to a member of the rehabilitation team, and we will tell you if we think it is appropriate and safe for you to do so.

3. **What should I do if I have angina when I am exercising on my own?**

Angina is an uncomfortable feeling in the chest. It usually feels like a heaviness or tightness in the centre of the chest, which may spread to the arms, neck, jaw, face, back or stomach. Use your GTN spray or tablets (if you have been given these) because this will increase the supply of blood to your heart and help to relieve the discomfort.



If at any point your pain becomes worse, or if you feel unwell (e.g. dizzy, sweaty, short of breath) please call 999 for an ambulance immediately.

If your pain is relieved, but if the episodes of angina are more frequent or are taking longer to go away, please arrange to see your GP to be reviewed.

If you notice that your angina has started to happen at night or when you are resting, it is important that you see your GP so that he/she is aware of your new symptoms.

How to contact us

We sincerely hope that you enjoy these exercise sessions. If you have any questions or concerns, please do not hesitate to ask one of the members of staff – see our contact details on page 2.

References

The information in this booklet is based on evidence. The following references were used:

American College of Sports Medicine (2006) Guidelines for Exercise Testing and Prescription. 6th Edition. Lippincott, Williams and Wilkins. Baltimore

Borg, G. (1998) Borg's Perceived Exertion and Pain Scales. Human Kinetics. Champaign, Illinois.

British Association of Cardiac Rehabilitation (2007). BACR Phase IV Exercise Instructor Manual, 4th Edition. Human Kinetics, Leeds.

Department of Health (2000) National Service Framework for Coronary Heart Disease. DOH. Chapter 7.

Thow, M. (2006) (Ed) Exercise Leadership in Cardiac Rehabilitation: An evidence based approach. Whurr Publishers Limited. Chichester.

PHYSICAL ACTIVITY DIARY

Please be as honest and accurate as possible

Date	Activity (e.g. walking)	Details of activity e.g. 30 minutes, 1.5 miles	Heart rate (if taken)	Effort score (1-10)	Comments (e.g. Chest pain? Short of breath? Enjoy?

PHYSICAL ACTIVITY DIARY

Please be as honest and accurate as possible

Date	Activity (e.g. walking)	Details of activity e.g. 30 minutes, 1.5 miles	Heart rate (if taken)	Effort score (1-10)	Comments (e.g. Chest pain? Short of breath? Enjoy?)

PHYSICAL ACTIVITY DIARY

Please be as honest and accurate as possible

Date	Activity (e.g. walking)	Details of activity e.g. 30 minutes, 1.5 miles	Heart rate (if taken)	Effort score (1-10)	Comments (e.g. Chest pain? Short of breath? Enjoy?)

PHYSICAL ACTIVITY DIARY

Please be as honest and accurate as possible

Date	Activity (e.g. walking)	Details of activity e.g. 30 minutes, 1.5 miles	Heart rate (if taken)	Effort score (1-10)	Comments (e.g. Chest pain? Short of breath? Enjoy?)

NAME:

THR: INTENSITY:

CHECK IN

DATE:

RBP: mmHg

RHR: bpm Reg/ Irreg

BS: mmol/L

SYMPTOMS?

MEDS?

COMMENTS: NP?

CHECK IN

DATE:

RBP: mmHg

RHR: bpm Reg/ Irreg

BS: mmol/L

SYMPTOMS?

MEDS?

COMMENTS: NP?

WARM UP 1: 5min

WARM UP 2: 5min

WARM UP 3: 5min	HR:
	EFF:

WARM UP 1: 5min

WARM UP 2: 5min

WARM UP 3: 5min	HR:
	EFF:

MAIN SESSION	HR:
	EFF:
MAIN SESSION	HR:
	EFF:
MAIN SESSION	HR:
	EFF:
MAIN SESSION	HR:
	EFF:
MAIN SESSION	HR:
	EFF:

MAIN SESSION	HR:
	EFF:
MAIN SESSION	HR:
	EFF:
MAIN SESSION	HR:
	EFF:
MAIN SESSION	HR:
	EFF:
MAIN SESSION	HR:
	EFF:

COOL DOWN: 5min

COOL DOWN: 5min

COOL DOWN: 5min

COOL DOWN: 5min

CHECK OUT

BP: mmHg

HR: bpm

BS: mmol/L

COMMENTS:

CHECK OUT

BP: mmHg

HR: bpm

BS: mmol/L

COMMENTS:

NAME:

THR: INTENSITY:

CHECK IN

DATE:

RBP: mmHg
RHR: bpm Reg/ Irreg

BS: mmol/L

SYMPTOMS?

MEDS?

COMMENTS: NP?

CHECK IN

DATE:

RBP: mmHg
RHR: bpm Reg/ Irreg

BS: mmol/L

SYMPTOMS?

MEDS?

COMMENTS: NP?

WARM UP 1: 5min
WARM UP 2: 5min
WARM UP 3: 5min
HR:
EFF:

WARM UP 1: 5min
WARM UP 2: 5min
WARM UP 3: 5min
HR:
EFF:

MAIN SESSION HR:
EFF:

MAIN SESSION HR:
EFF:

MAIN SESSION HR:
EFF:

MAIN SESSION HR:
EFF:

MAIN SESSION HR:
EFF:

MAIN SESSION HR:
EFF:

MAIN SESSION HR:
EFF:

MAIN SESSION HR:
EFF:

MAIN SESSION HR:
EFF:

MAIN SESSION HR:
EFF:

COOL DOWN: 5min
COOL DOWN: 5min

COOL DOWN: 5min
COOL DOWN: 5min

CHECK OUT

BP: mmHg
HR: bpm
BS: mmol/L

COMMENTS:

CHECK OUT

BP: mmHg
HR: bpm
BS: mmol/L

COMMENTS:

NAME:	
THR:	INTENSITY:

CHECK IN	
DATE:	
RBP: mmHg	
RHR: bpm	Reg/ Irreg
BS: mmol/L	
SYMPTOMS?	
MEDS?	
COMMENTS:	NP?

CHECK IN	
DATE:	
RBP: mmHg	
RHR: bpm	Reg/ Irreg
BS: mmol/L	
SYMPTOMS?	
MEDS?	
COMMENTS:	NP?

WARM UP 1:	5min	
WARM UP 2:	5min	
WARM UP 3:	5min	HR: EFF:

WARM UP 1:	5min	
WARM UP 2:	5min	
WARM UP 3:	5min	HR: EFF:

MAIN SESSION	HR: EFF:
MAIN SESSION	HR: EFF:
MAIN SESSION	HR: EFF:
MAIN SESSION	HR: EFF:
MAIN SESSION	HR: EFF:

MAIN SESSION	HR: EFF:
MAIN SESSION	HR: EFF:
MAIN SESSION	HR: EFF:
MAIN SESSION	HR: EFF:
MAIN SESSION	HR: EFF:

COOL DOWN:	5min
COOL DOWN:	5min

COOL DOWN:	5min
COOL DOWN:	5min

CHECK OUT	
BP: mmHg	
HR: bpm	
BS: mmol/L	
COMMENTS:	

CHECK OUT	
BP: mmHg	
HR: bpm	
BS: mmol/L	
COMMENTS:	

NAME:

THR: INTENSITY:

CHECK IN

DATE:

RBP: mmHg
RHR: bpm Reg/ Irreg

BS: mmol/L

SYMPTOMS?

MEDS?

COMMENTS: NP?

CHECK IN

DATE:

RBP: mmHg
RHR: bpm Reg/ Irreg

BS: mmol/L

SYMPTOMS?

MEDS?

COMMENTS: NP?

WARM UP 1: 5min
WARM UP 2: 5min
WARM UP 3: 5min
HR:
EFF:

WARM UP 1: 5min
WARM UP 2: 5min
WARM UP 3: 5min
HR:
EFF:

MAIN SESSION HR:
EFF:

MAIN SESSION HR:
EFF:

MAIN SESSION HR:
EFF:

MAIN SESSION HR:
EFF:

MAIN SESSION HR:
EFF:

MAIN SESSION HR:
EFF:

MAIN SESSION HR:
EFF:

MAIN SESSION HR:
EFF:

MAIN SESSION HR:
EFF:

MAIN SESSION HR:
EFF:

COOL DOWN: 5min
COOL DOWN: 5min

COOL DOWN: 5min
COOL DOWN: 5min

CHECK OUT

BP: mmHg
HR: bpm
BS: mmol/L

COMMENTS:

CHECK OUT

BP: mmHg
HR: bpm
BS: mmol/L

COMMENTS:

NAME:
 THR: INTENSITY:

CHECK IN

DATE:

RBP: mmHg

RHR: bpm Reg/ Irreg

BS: mmol/L

SYMPTOMS?

MEDS?

COMMENTS: NP?

CHECK IN

DATE:

RBP: mmHg

RHR: bpm Reg/ Irreg

BS: mmol/L

SYMPTOMS?

MEDS?

COMMENTS: NP?

WARM UP 1:	5min	
WARM UP 2:	5min	
WARM UP 3:	5min	HR: EFF:

WARM UP 1:	5min	
WARM UP 2:	5min	
WARM UP 3:	5min	HR: EFF:

MAIN SESSION	HR: EFF:
MAIN SESSION	HR: EFF:
MAIN SESSION	HR: EFF:
MAIN SESSION	HR: EFF:
MAIN SESSION	HR: EFF:

MAIN SESSION	HR: EFF:
MAIN SESSION	HR: EFF:
MAIN SESSION	HR: EFF:
MAIN SESSION	HR: EFF:
MAIN SESSION	HR: EFF:

COOL DOWN:	5min	
COOL DOWN:	5min	

COOL DOWN:	5min	
COOL DOWN:	5min	

CHECK OUT

BP: mmHg

HR: bpm

BS: mmol/L

COMMENTS:

CHECK OUT

BP: mmHg

HR: bpm

BS: mmol/L

COMMENTS:

NAME:

THR: INTENSITY:

CHECK IN

DATE:

RBP: mmHg
RHR: bpm Reg/ Irreg

BS: mmol/L

SYMPTOMS?

MEDS?

COMMENTS: NP?

CHECK IN

DATE:

RBP: mmHg
RHR: bpm Reg/ Irreg

BS: mmol/L

SYMPTOMS?

MEDS?

COMMENTS: NP?

WARM UP 1: 5min
WARM UP 2: 5min
WARM UP 3: 5min
HR:
EFF:

WARM UP 1: 5min
WARM UP 2: 5min
WARM UP 3: 5min
HR:
EFF:

MAIN SESSION
HR:
EFF:

MAIN SESSION
HR:
EFF:

MAIN SESSION
HR:
EFF:

MAIN SESSION
HR:
EFF:

MAIN SESSION
HR:
EFF:

MAIN SESSION
HR:
EFF:

MAIN SESSION
HR:
EFF:

MAIN SESSION
HR:
EFF:

MAIN SESSION
HR:
EFF:

MAIN SESSION
HR:
EFF:

COOL DOWN: 5min
COOL DOWN: 5min

COOL DOWN: 5min
COOL DOWN: 5min

CHECK OUT

BP: mmHg
HR: bpm
BS: mmol/L

COMMENTS:

CHECK OUT

BP: mmHg
HR: bpm
BS: mmol/L

COMMENTS:

SAFETY CONSIDERATIONS FOR SESSIONS AT THE GYM

In order to make sure you are safe during your exercise session, please read through the following information carefully.

- While you are being checked in it is your responsibility to **tell your Cardiac Rehabilitation Nurse about any illness / symptoms** that you have had since you last attended the class.
- Your exercise prescription is written out in your exercise folder for you to refer to. **Please read your prescription carefully before you start each piece of equipment. Do not exceed the prescribed level. Speak to an exercise physiologist if you are not happy with your programme.**
- **If you are in any doubt, ask a member of staff before you start exercising.**

When using the treadmill it is important that you:

- Attach the safety cord to your belt/ waistband before starting the machine.
- Make sure that you are clear about the speed that you require **before** starting the treadmill.
- Reset the treadmill completely prior to starting the machine – this can be done by pressing the 'reset' button or the 'stop' button twice.
- Face forward at all times. Do not turn around to talk to people.
- Use hand rails for support but do not grip them tightly, lean or push on the hand rails.
- Familiarise yourself with the 'stop' button, and the emergency stop procedure, in case you need to stop the machine quickly.
- When increasing the speed, lightly press and release the button repeatedly, rather than applying pressure for a prolonged time.
- Do not put your exercise books on any part of the treadmill. Check your programme before you start and put your book somewhere where it will not fall onto the equipment.

When using the recumbent / upright bikes / schwinn bikes:

- Upright bikes – make sure that the seat is in the right position and that it is secure **before** you get on to the bike.
- The recumbent bikes are best adjusted while sitting on the bike, using your body weight to move the seat.
- Your legs should be **almost completely straight** when you are pedalling whatever type of bike you are using.
- Make sure that you are clear about what level of resistance you require. If in doubt, please check with a member of staff before you start.
- Reset the bike completely before starting the machine.

When using the rowing machine:

- Make sure that the resistance lever is in the correct place **before** you sit down.
- Make sure that the seat is secured when you sit down. You can do this by either holding onto it, or pushing the seat back as far as it will go before you sit down.
- Secure your feet appropriately, using the foot straps provided.
- Maintain good posture throughout the activity – **keep your back straight**, and try to remain as upright as possible.
- When you have finished rowing, safely return the bar to the original position, slide the seat as far back as possible, and carefully stand up.

When using the X-trainer:

- Take care getting on and off the machine – the foot pedals will move as soon as you stand on them. When you get onto the machine make sure you hold onto the fixed handles and not the ones that move.
- Stand on the lowest foot pedal first – otherwise the other pedal may hit your shin. Make sure that your toes are as far forward on the pedals as possible.

When using the arm bike:

- Your arms should always be slightly bent, even when at the furthest point away from you.
- The seat height should be set so that your arms and shoulders are level. Make sure you are not pedalling above or below shoulder height.
- Make sure your feet are either flat on the floor or use the bars on the wall for support.

REMEMBER:

- If at any point during your exercise programme you feel uncomfortable/ unhappy to continue with the activity, **stop immediately** and tell a member of staff.
- If you are in any doubt about these instructions, please check with a member of staff **before** starting the activity.
- If you experience any pain or discomfort (chest pain/muscular pain) you must tell a member of staff **immediately**.

If you need an interpreter or need a document in another language, large print, Braille or audio version, please call **01865 221473**. When we receive your call we may transfer you to an interpreter. This can take some time, so please be patient.